



Defiance County General Health District Epidemiology Assessment

3rd Quarter Report
October 3, 2018

Senior Falls by Month

Table 1. Number of fall-related ED visits by month for Defiance County residents 65 years and older¹

Month	2018	5-Year Average
January	42	29.8
February	49	30.6
March	39	30.2
April	29	24.2
May	33	33.2
June	34	33.6
July	30	33.4
August	30	32.6
September	43	30.6
October		
November		
December		
Total	329	

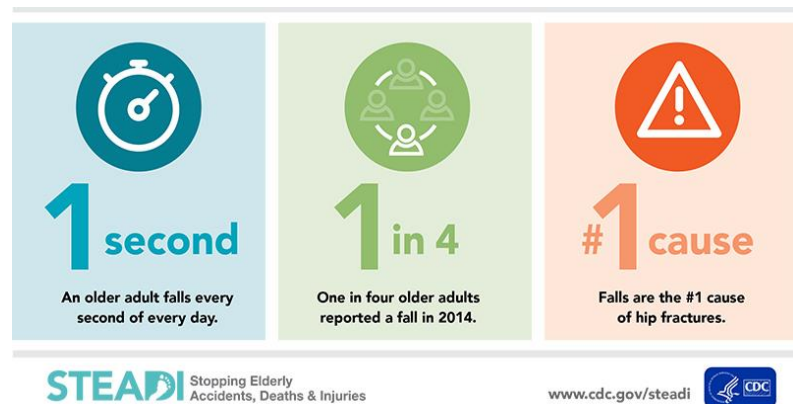
Over 100,000 individuals in the U.S. turn 65 every day³. According to the CDC with the aging population the number of senior falls are projected to increase 49 million falls in 2030³. These falls threaten the health and independence of older adults and result in high medical cost across the U.S. health care system.

Falls Among the Elderly

This report was created as a surveillance effort to help understand the needs of the community concerning senior falls. Seniors are defined in this report as adults ages 65 years and older. Table 1 displays the total estimated number of emergency department (ED) visits coded as falls from all Defiance County hospital ED records. In the third quarter of 2018, there were approximately 43 fall-related ED visits in residents 65 years and older. Sixty-three percent of the falls occurred in females.

There were seventy-seven emergency medical service (EMS) runs, where an EMS team was dispatched to a resident's home and assisted an individual that was 65 years or older that fell in Defiance City². Eighty-eight percent of the lift assist were not transported to the hospital for further assessment.

Figure 1. Older Adult Falls in U.S.³



STEADI Stopping Elderly Accidents, Deaths & Injuries

www.cdc.gov/steadi

1. ED visits coded as falls are derived from data in the EpiCenter and represent only those reported in the system. These data are provisional and subject to change when additional data are reported. All data is on Defiance County residents, including residents who may have sought medical help at a hospital outside of Defiance County. Falls are selected based on codes at diagnosis. Data reported as of 10/1/2018. 2. Defiance Fire and Rescue Division, EMS 3. CDC (2017) STEADI.