



Defiance County General Health District Epidemiology Assessment

3rd Quarter Report

October 15, 2019

Senior Falls by Month

Table 1. Number of fall-related ED visits by month for Defiance County residents 65 years and older¹

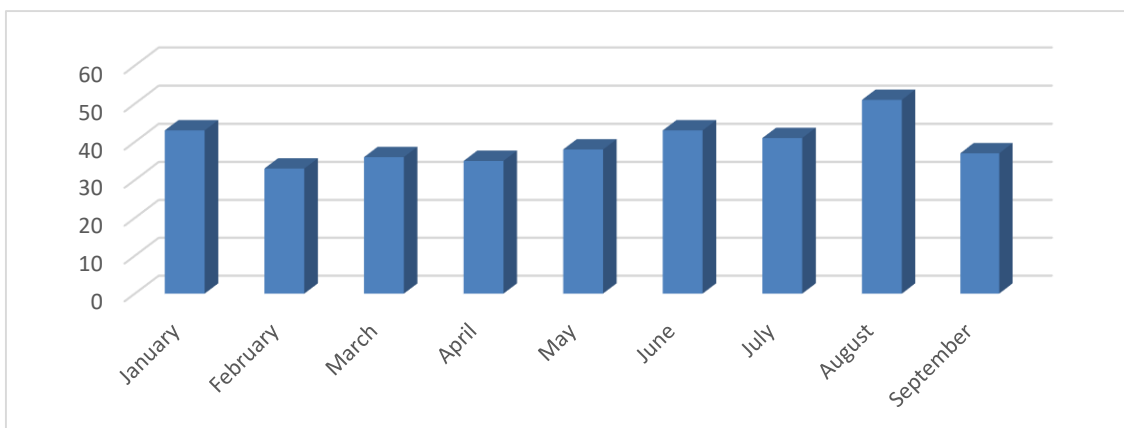
| Month | 2019 | 5-Year Average |
|-----------|------|----------------|
| January | 43 | 33.2 |
| February | 33 | 37.4 |
| March | 36 | 32.8 |
| April | 35 | 24.8 |
| May | 38 | 35.4 |
| June | 43 | 34.4 |
| July | 41 | 36.2 |
| August | 51 | 34.2 |
| September | 37 | 36.6 |
| October | | |
| November | | |
| December | | |
| Total | 228 | |

Falls Among the Elderly

This report was created as a surveillance effort to help understand the needs of the community concerning senior falls. Seniors are defined in this report as adults ages 65 years and older. Table 1 displays the total estimated number of emergency department (ED) visits coded as falls from all Defiance County hospital ED records. In the third quarter of 2019, there were approximately 129 fall-related ED visits in residents 65 years and older.

In the third quarter, there were 86 emergency medical service (EMS) runs, where an EMS team was dispatched to a resident's home and assisted an individual that was 65 years or older that fell in Defiance City². Thirty-three percent of the falls were not transported to the hospital for further assessment².

Figure 1. ED visits for fall related injuries by month, 2019¹



1. ED visits coded as falls are derived from data in the EpiCenter and represent only those reported in the system. These data are provisional and subject to change when additional data are reported. All data is on Defiance County residents, including residents who may have sought medical help at a hospital outside of Defiance County. Falls are selected based on codes at diagnosis. Data reported as of 10/8/2019. 2. Defiance Fire and Rescue Division, EMS.