



Defiance County General Health District Epidemiology Assessment 2022 4th Quarter Report January 2023

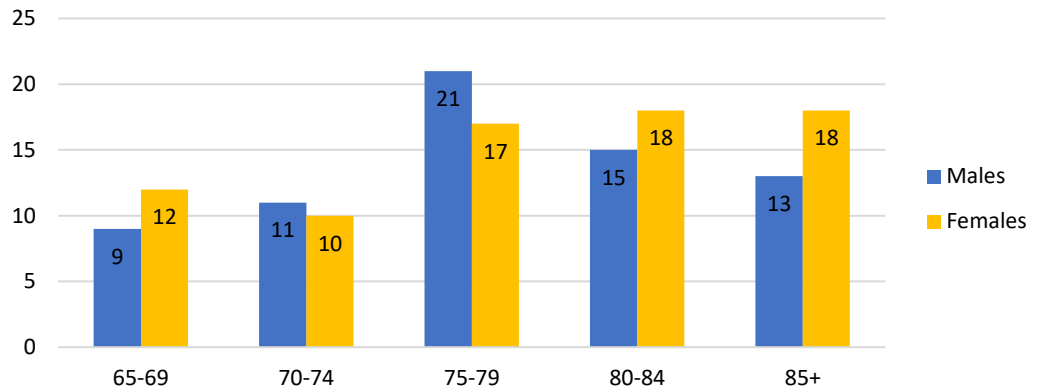
Falls Among the Elderly

This report was created as a surveillance effort to help understand the needs of Defiance County communities concerning senior falls. Seniors are defined in this report as adults aged 65 years and older. From October 1, 2022, to December 31, 2022, there were 109 emergency service runs for senior falls. 45 lift assists were not transported to a hospital, 64 falls were transported. In the fourth quarter, there were 144 total emergency department visits for senior falls.

2022 Senior Fall ED Visits

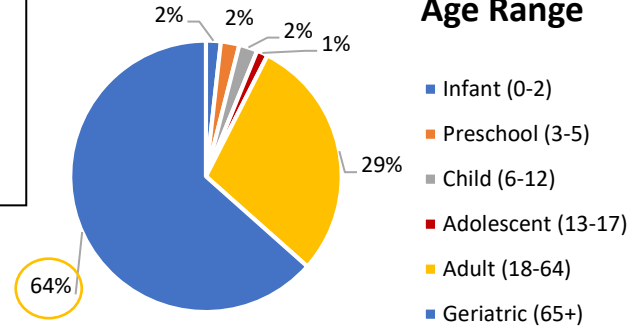
Month	2022
January	37
February	37
March	31
April	35
May	43
June	40
July	31
August	59
September	52
October	49
November	52
December	43
Total	509

4th Quarter 2022 Senior Falls ED Visits in Males and Females by Geriatric Age Range

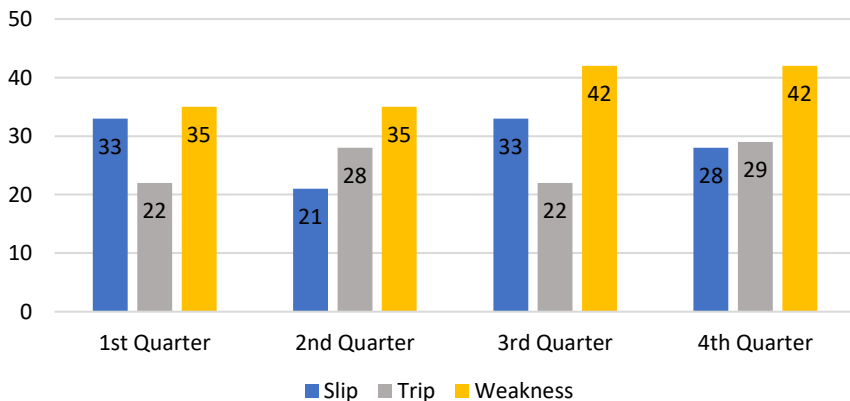


There were 75 emergency department visits for females and 69 visits for males in Defiance County from October 1, 2022 to December 31, 2022. Individuals aged 79 years and older accounted for 70% of the ED visits for senior falls. Out of all ED visits for falls, 64% of visits were for those aged 65 years and older.

4th Quarter ED Visits for Falls by Age Range



Three Most Common Reasons for Senior Falls in 2022



Quarter	Lift Assists Not Transported to a Hospital	Falls Transported to a Hospital
1 st	36	59
2 nd	39	52
3 rd	36	70
4 th	45	64

Senior fall emergency department visits were filtered in EpiCenter Database for "fall" and "fell." Data for emergency service runs was provided by the Defiance Fire and Rescue Department. All data was collected for the date range, October 1, 2022 – December 31, 2022.